

# Whiteside COUNTY AIRPORT



Connecting business. Connecting your world.

Serving the Sauk Valley and beyond!



*Located in the heart of Northwest Illinois*

Adjacent to Interstate 88, US 30, and IL 40!

*Home to:*



*Neighbors to:*



## **The United States is a Country of Makers. Northwest Illinois is where they get it done.**

As America's gateway between the East and the West, Illinois has long been one of the nation's industrial centers. In 2016, the state produced more than \$100 billion in manufactured goods, with about half that value exported abroad. More than 12,400 manufacturing companies employed roughly 571,000 workers.



### **Holding Strong in Manufacturing**

While other regions in the country have seen significant losses in manufacturing, 21% of Northwest Illinois' GDP still comes from manufacturing. With a traditional **blue collar workforce**, **affordable cost of living**, and impeccable **transportation infrastructure**, Northwest Illinois is particularly well-suited for fabrication and manufacturing.

Within a 100-mile radius of Whiteside County, a number of small cities host the headquarters of major farm equipment and heavy machinery manufacturers, including Deere & Company (in Moline, 40 miles west) and Caterpillar (in Peoria, 90 miles south). About 60% of the state's manufacturing output comes from the Chicago metro area, which is just 99 miles to the east. Major sectors there include computers, electronic equipment, chemical products, packaged food and beverages, and motor vehicles.

## **Deep in the Heart of Agribusiness Northwest Illinois is surrounded on all sides by the most important agricultural zones in the United States and we make the most of it.**

Nestled in the Mississippi River valley, Northwest Illinois sits at the intersection of America's agricultural economy.

### **Ag Leadership**

Illinois is an agricultural powerhouse, a "Top Five" State for agricultural production, and Whiteside County has some of the State's most productive farmland.

And agribusiness doesn't stop there – it encompasses all agricultural inputs and outputs, from seed, fertilizers, and feed, to farm implements, and machinery, and to value added food products.

Whiteside County/Northwest Illinois has a competitive edge over many other locations due to our access to raw materials, our central location and superior transportation system.



### **Food Processing**

With 2,640 food manufacturing companies, Illinois ranks first in the nation with \$180 billion in processed food sales, and the Whiteside/Northwest Illinois region is well-equipped to turn the state's crops and livestock into food and industrial products. In fact, the region is home to several well-known names in food manufacturing, including Archer Daniels Midland, Del Monte, Nestle, Armour, Tyson, Crest Foods, Mighty Vine and Bright Farms, and has the room to grow profitable agribusinesses.

# DISCOVER THE NORTHWEST ILLINOIS ADVANTAGE

Wide open green spaces, friendly small towns, low crime, and no congestion keep things simple. It's an affordable, business-friendly environment to grow your business.

## BY THE NUMBERS:

### TRANSPORTATION INFRASTRUCTURE THAT KEEPS BUSINESS MOVING

**99**  
MILES  
from Chicago Metro Area

**5**  
INTERSTATES  
in NW Illinois

**5**  
RAILROADS  
Including UP & BNSF

**2**  
BARGE  
Mississippi River Terminals

**542K**  
WORKFORCE  
in NW Illinois

**13%**  
MANUFACTURING  
Jobs in NW Illinois

**74%**  
HOMEOWNERSHIP  
in Whiteside County

**<12%**  
NATIONAL  
Household Median Income

### A STABLE LABOR POOL THAT KNOWS HOW TO WORK

### A MORE AFFORDABLE BUSINESS ENVIRONMENT THAN THE CHICAGO METRO AREA

**LOW**  
UNION  
Labor Presence

**-7%**  
UTILITY  
Cost vs. Chicago

**-24%**  
TRANSPORTATION  
Cost vs. Chicago

**-18%**  
WAGE  
Median Hourly vs. Chicago

**19**  
TRADE SCHOOLS  
or Community Colleges

**29**  
UNIVERSITIES  
within 50 miles

**5**  
DEVELOPMENT  
or retraining programs

**1**  
FORBES  
Awarded Vocational School

### A PROACTIVE APPROACH TO CLOSING THE SKILLS GAP

### REDEVELOPMENT PROJECTS BRINGING SMALL TOWNS BACK TO LIFE

**14,000**  
ACRES  
of State Parks & Preserves

**125**  
MILES  
of Boating & Fishing

**30**  
DOWNTOWNS  
to Explore

**17**  
GALLERIES  
to Inspire

**14,000**  
ACRES  
of State Parks & Preserves

**125**  
MILES  
of Boating & Fishing

**30**  
DOWNTOWNS  
to Explore

**17**  
GALLERIES  
to Inspire

### REDEVELOPMENT PROJECTS BRINGING SMALL TOWNS BACK TO LIFE

## WHITESIDE COUNTY ECONOMIC DEVELOPMENT DEPARTMENT

### CONNECT WITH US.

[www.nwillinoisadvantage.com](http://www.nwillinoisadvantage.com)





Rock Falls Airport  
Rock Falls, Illinois

## HISTORY IN BRIEF

1946 - A referendum was passed in August, establishing an Airport Authority in Whiteside County. A board was formed to operate as a separate board from the County government to oversee and handle airport affairs.

1946 - In October, a site in Rock Falls was inspected by the city and was given approval, however the airport was to remain privately owned and operated by Darryl Wolfe and Kenneth Zimmerman.

1946 - Approval of for the Class 1 Airport, for public use and an approved landing site.

1956 - In May, The Whiteside County Airport Commission took over managing the airport. Later that year, the name of the changed from the Rock Falls Airport to the Whiteside County Airport.

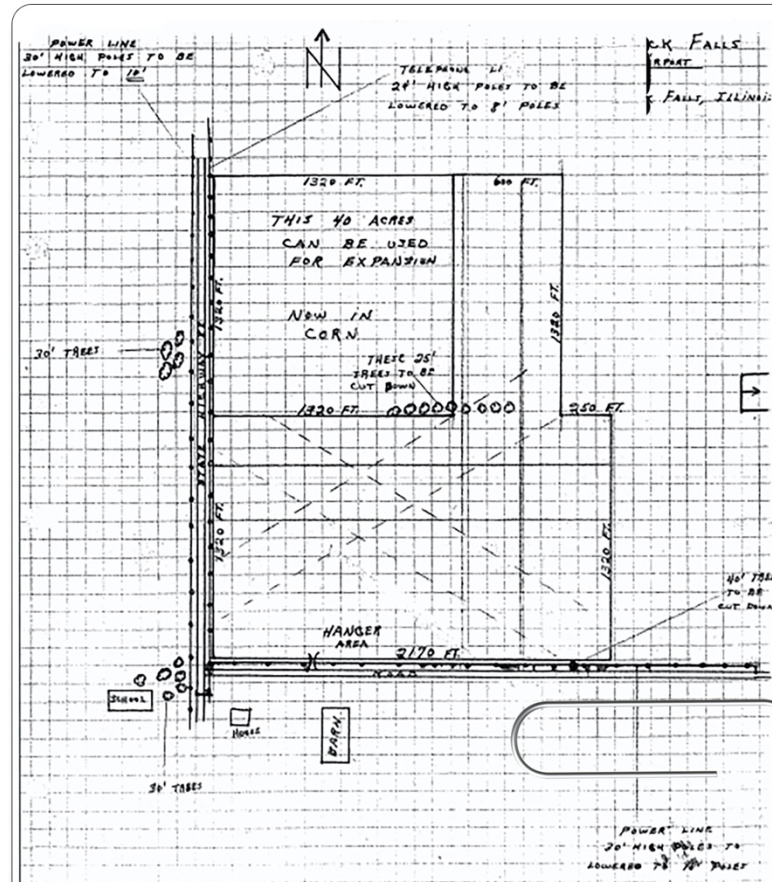
1958 - The first T-hangar was built.

1962 - Ozark Airlines began service from the airport.

1967 - In the spring, responding to the need to accommodate Ozark Airline's larger aircraft, the airport enlarged the existing north/south runway to 3900' x 100'. An additional runway was then built (7/25), measuring 5600' x 100'.

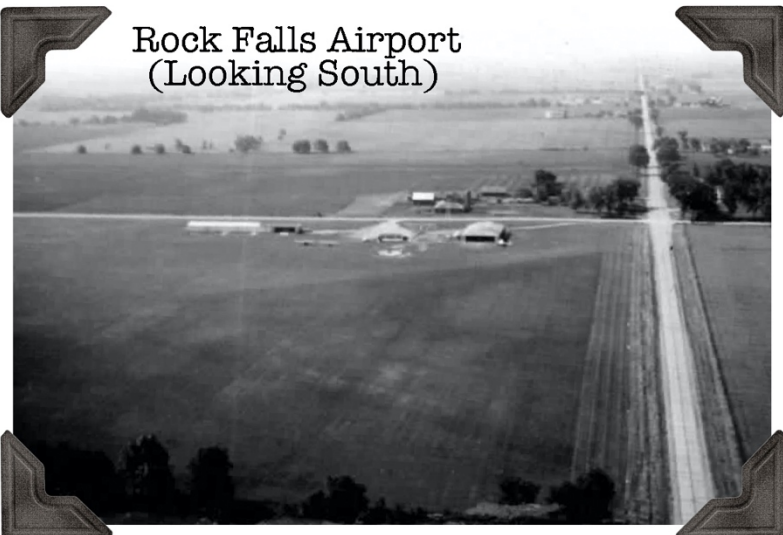
1973 - In August, the Whiteside County Airport was dedicated to Joseph A. Bittorf.

1985 - Runway 7/25 was extended and widened to its present dimensions: 6499' x 150'.



Original Rock Falls Airport  
(SW Corner of now Whiteside County Airport)

Rock Falls Airport  
(Looking South)



1996 - United Express operated by Great Lakes began service to the airport.

2016 - Whiteside County Airport was awarded the Illinois Department of Transportation General Aviation Airport of the Year.

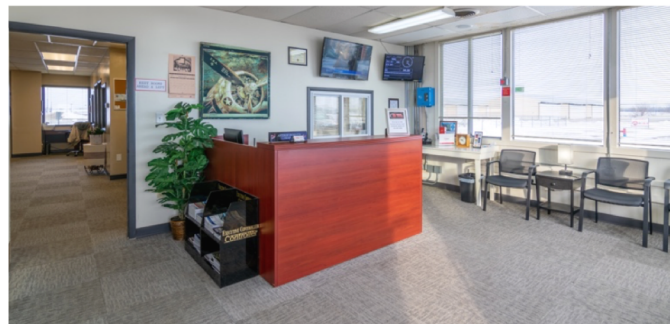
2018 - Airport signage replacement project was completed and work on converting incandescent airport lighting with LED began on Taxiway A (Alpha).

## OFFERING A WIDE RANGE OF SERVICES FOR COMMERCIAL AND PRIVATE AVIATION

- Full-service FBO terminal with pilots' lounge, flight planning/business center, WiFi, and conference table.
- No landing fees
- No short-term tie down or overnight fees
- Long runway: 7/25 (6,499 x 150')  
DC-9/ Boeing 737 capable  
RWY 25: Precision Instrument Approach (ILS)  
Non-Precision Approach (GPS)  
Lighting: MALSR, HIRL
- RWY 7: Non-Precision Approaches  
(LOC BC/GPS) 7  
Lighting: REIL, HIRL
- Crosswind Runway: 18/36 (3900 x 100')  
Non-Precision Runway Markings  
Lighting: REIL, MIRL  
On Dusk to Dawn
- Fuel on-site (Jet A and 100LL)
- Ground Power Unit (GPU)
- Avionics services
- Detailing services
- Maintenance services
- Flight School
- Courtesy car, rental car pick-up service, taxi, and Lyft transportation available.
- Hotels, restaurants, shopping within 1 mile of the airport
- Catering services
- Multiple attractions nearby including the birthplace of President Ronald Reagan

### HANGARS FOR LEASE

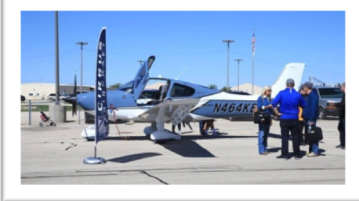
- T-Hangars, electric lift doors, paved floors, varying square footage.
- Medium sized hangars (60 x 80'), paved floors, heated, electric lift doors.
- County/Corporate Hangar (*Coming Soon*)
- For lease rates and availability, contact the airport manager at:  
[airmail@whitesidecountyairport.org](mailto:airmail@whitesidecountyairport.org)

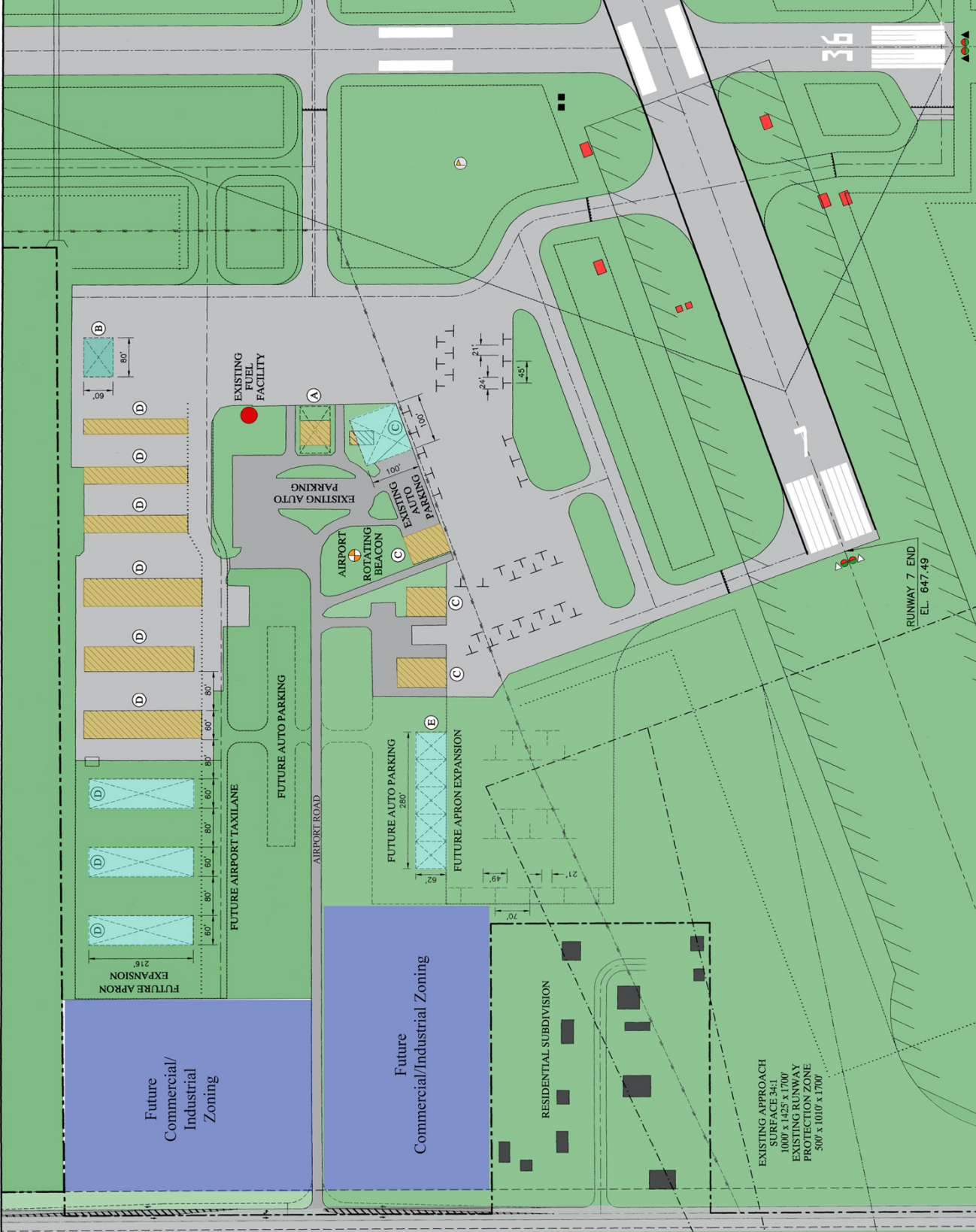


## Community Outreach

Beginning in 2017, the Whiteside County Airport Board and Airport Manager began an extensive community outreach initiative. Events include Aviation Career Day, Discover Aviation Day, EAA Young Eagles Events, Touch-A-Truck, Warbirds Over Whiteside, and WingsFest.

The purpose of these events is to encourage and inspire individuals to discover everything aviation has to offer, here in Whiteside County, and beyond. It provides an opportunity for anyone with even the slightest interest, to get an up close and personal interaction with the aviation community, as well as gives the Whiteside County Airport to showcase our amazing facility.





SCALE AS NOTED JOB NO. 01292-01  
 DATE 7/19/2002  
 SHEET 5 OF 11 SHEETS

TERMINAL AREA PLAN  
 WHITESIDE COUNTY AIRPORT  
 STERLING-ROCK FALLS, ILLINOIS

DESIGN BY S.A.W.  
 DRAWN BY M.A.W.  
 CHECKED BY B.A.H./L.J.S.  
 APPROVED BY B.M.H.

**Building Color Key**

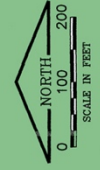
- Existing Hangar Space or Building
- Future Hangar Space
- Future Commercial/Industrial Zoning

**LEGEND**

EXISTING	FUTURE	DESCRIPTION
---	---	AIRPORT PROPERTY LINE
---	---	RIGHT OF WAY (R.O.W.)
---	---	FAR PART 77 SURFACE
---	---	RUNWAY PROTECTION ZONE (R.P.Z.)
---	---	AIRFIELD PAVEMENT
---	---	AIRPORT BUILDINGS
---	---	HOUSES AND OUTBUILDINGS
---	---	BUILDING RESTRICTION LINE (B.R.L.)
---	---	RUNWAY AND TAXIWAY SAFETY AREA (R.S.A.)
---	---	OBJECT FREE AREA (O.F.A.)
---	---	RUNWAY VISIBILITY ZONE (R.V.Z.)
---	---	AIRCRAFT PARKING LIMITS (A.P.L.)
---	---	LS-GLIDE SLOPE ANTENNA & CRITICAL AREA
---	---	LS-LOCALIZER ANTENNA & CRITICAL AREA
---	---	AIRPORT REFERENCE POINT (A.R.P.)
---	---	RUNWAY END IDENTIFIER LIGHT (BEL)
---	---	THRESHOLD LIGHTS
---	---	AIRPORT ROTATING BEACON
---	---	MONUMENT
---	---	N/A
---	---	WIND CONE AND SEGMENTED CIRCLE

**AIRPORT BUILDING TABLE**

LETTER	DESCRIPTION
A	TERMINAL BUILDING
B	MAINTENANCE HANGAR
C	FBO
D	T-HANGAR
E	CORPORATE HANGAR



**Whiteside COUNTY AIRPORT**

**CMT**  
 CONSULTING ENGINEERS  
 SPRINGFIELD, IL 62703

**REVISIONS**

NO.	BY	DATE	NO.	BY	DATE

**Future Layout Plan of Terminal Area**





# Pilot Information

## Location Information

ICAO/FAA Identifier: KSQI/SQI  
 Lat/Long  
 41-44-34.2000N 089-40-34.6000W  
 41-44.570000N 089-40.576667W  
 41.7428333,-89.6762778  
 (estimated)  
 Elevation: 647.6 ft. / 197.4 m (surveyed)  
 Variation: 02W (2020)  
 From city: 2 miles S of central business district of ROCK FALLS, ILLINOIS  
 Time zone: UTC -5  
 (UTC -6 during Standard Time)  
 Zip code: 61071

## Runway Information

**RUNWAY 7 / 25**  
 Dimensions: 6499 x 150 ft. / 1981 x 46 m  
 Runway 25: ILS, GPS, Precision Runway Markings, MALSR, HIRL  
 Runway 7: LOC BC, GPS, PAPI, REIL, HIRL  
 Weight bearing capacity:  
 Single wheel: 50.0  
 Double wheel: 60.0  
 Double tandem: 90.0

**RUNWAY 18 / 36**  
 Dimensions: 3900 x 100 ft. / 1189 x 30 m  
 Non-Precision Runway Markings, REIL, MIRL  
 Weight bearing capacity:  
 Single wheel: 18.0

## Airport Operations

Control tower: no  
 ARTCC: CHICAGO CENTER  
 FSS: KANKAKEE FLIGHT SERVICE STATION  
 NOTAMS facility: SQI (NOTAM-D service available)  
 Attendance: 0800-1700  
 ARPT UNATNDD NEW YEARS; XMAS & THANKSGIVING.  
 Wind indicator: lighted  
 Segmented circle: yes  
 Beacon: white-green (lighted land airport)  
 Operates sunset to sunrise.

## Airport Communications

CTAF/UNICOM: 123.0  
 WX AWOS-3PT: 119.175  
 (815-626-2704)  
 ROCKFORD APPROACH: 126.0 [0600-2200]  
 ROCKFORD DEPARTURE: 126.0 [0600-2200]  
 CLEARANCE DELIVERY: 128.0  
 WX AWOS-AV at C73 (12 nm NE): 118.575  
 (815-288-2039)



## Airport Directory

### FBO – Full Service

Sauk Valley Aviation  
10950 Hoover Road  
Rock Falls, IL 61081

Office: (815) 213-7939  
Fax: (815) 716 8269  
Web: <http://www.saukvalleyaviation.com>

### FBO – Avionics

Radio Ranch, Inc.  
10924 Hoover Road  
Rock Falls, IL 61071

Office: (815) 622-9000  
Fax: (815) 622-9163  
Web: <http://www.radioranchinc.com>

### Government – Airport Administration

Whiteside County Airport  
10950 Hoover Road  
Rock Falls, IL 61071

Manager Office: (815) 626-3750  
Email: [airmail@whitesidecountyairport.org](mailto:airmail@whitesidecountyairport.org)  
Web: [www.whitesidecountyairport.org](http://www.whitesidecountyairport.org)

### Government – Law Enforcement

Illinois State Police Air Operations  
10960 Hoover Rd.  
Rock Falls, IL 61071

Phone #: (815) 622-3100  
Web: <https://www.isp.state.il.us/services/airops.cfm>

### Government – Military Auxiliary

Whiteside County Civil Air Patrol  
10950 Hoover Road  
Rock Falls, IL 61071

Web: [www.whitesidecap.org](http://www.whitesidecap.org)  
Email: [rsmith@ilwg.cap.gov](mailto:rsmith@ilwg.cap.gov)

### Organizations – Flying Club(s)

Twin Cities Air Activities Club  
d.b.a. Twin Cities Flying Club  
10932 Hoover Road  
Rock Falls, IL 61071

Email: [airmail@twincitiesflyingclub.org](mailto:airmail@twincitiesflyingclub.org)  
Web: [www.twincitiesflyingclub.org](http://www.twincitiesflyingclub.org)

### Organizations – Pilot Association(s)

Sauk Valley Pilots Association  
10950 Hoover Road  
Rock Falls, IL 61071

Web: <https://saukvalleypilots.weebly.com/>

